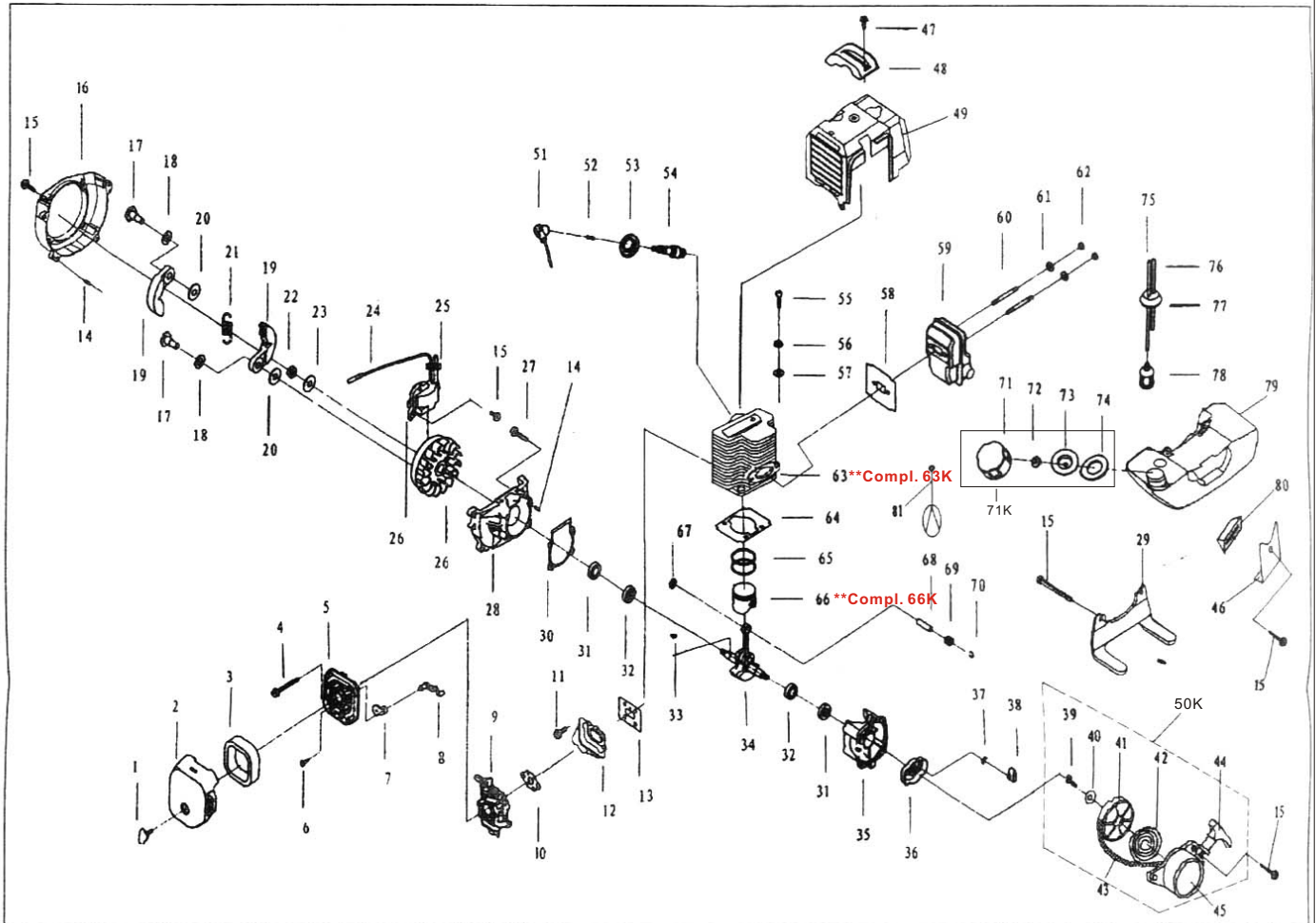
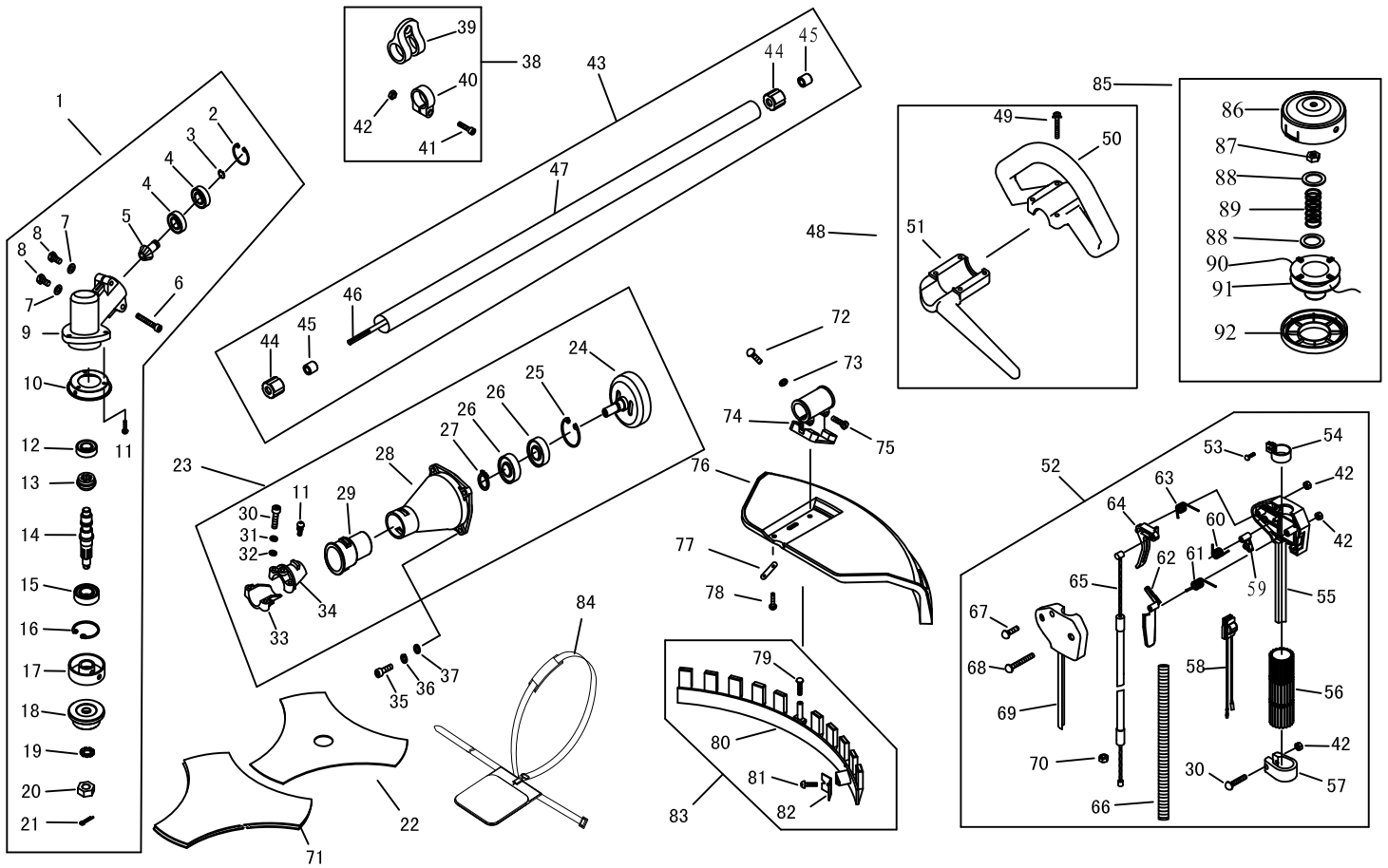


FIG. 1: T233 Gasoline Engine Explosive Picture



Ser.NO.	Code	Part Name	Qty	Ser.NO.	Code	Part Name	Qty	Ser.NO.	Code	Part Name	Qty
1-1	16233101	SCREW	1	1-28	16233128	FRONT HALF CRANKCASE	1	1-56	16233156	WASHER 5	4
1-2	16233102	CLEANER OUTSIDE COVER	1	1-29	16233129	STAND	1	1-57	16233157	WASHER 5	4
1-3	16233103	CLEANER ELEMENT	1	1-30	16233130	CRANK CASE GASKET	1	1-58	16233158	SEALING WASHER	1
1-4	16233104	SCREW M5 x 55	2	1-31	16233131	OIL SEAL	1	1-59	16233159	MUFFLER COMP	1
1-5	16233105	CLEANER INSIDE COVER	1	1-32	16233132	BALL BEARING 6001/P5	1	1-60	16233160	BOLT	2
1-6	16233106	SCREW	1	1-33	16233133	KEY	1	1-61	16233161	WASHER 5	1
1-7	16233107	CHOKER	1	1-34	16233134	CRANK SHAFT COMP	1	1-62	16233162	NUT M5	2
1-8	16233108	CHOKER HANDLE	1	1-35	16233135	REAR HALF CRANK CASE	1	1-63K	16233163K	CYLINDER Block ASSY (Including Piston Assv)	1
1-9	16233109	CARBURETOR	1	1-36	16233136	STARTER PULLEY ASSY	1	1-64	16233164	CYLINDER WASHER	1
1-10	16233110	SEALING WASHER	1	1-37	16233137	STARTER PAWL SPRING	1	1-65	16233165	PISTON RING	1
1-11	16233111	SCREW M5 x 20	6	1-38	16233138	STARTER PAWL	1	1-66	16233166	PISTON	1
1-12	16233112	INLET MANIFOLD	1	1-39	16233139	SCREW M5 x 10	1	1-66K	16233166K	PISTON ASSY (Including Ring Set, Pin & circlip)	1
1-13	16233113	CYLINDER WASHER	1	1-40	16233140	RECOIL SPRING	1	1-67	16233167	STOP RING	1
1-14	16233114	ANNUL B4 x 10	4	1-41	16233141	STARTER ROPE REEL	1	1-68	16233168	PISTON PIN	1
1-15	16233115	SCREW M5 x 20	8	1-42	16233142	RECOIL SPRING	1	1-69	16233169	NEEDLE BEARING	1
1-16	16233116	FAN COVER	1	1-43	16233143	ROPE	1	1-70	16233170	PISTON PIN CLRCLT	2
1-17	16233117	CLUTCH SIEP SCREW	2	1-44	16233144	STARTER HANDLE	1	1-71	16233171	FUEL TANK LID	1
1-18	16233118	WASHER	2	1-45	16233145	RECOIL STARTER BODY	1	1-71K	16233171K	FUEL TANK CAP ASSY	1
1-19	16233119	CLUTCH SHOE COMP	2	1-46	16233146	STAND	1	1-72	16233172	AIRINKLET MOUTH	1
1-20	16233120	WASHER	2	1-47	16233147	SCREW M5 x 14	1	1-73	16233173	FRAME	2
1-21	16233121	CLUTCH SPRING	1	1-48	16233148	COVER	1	1-74	16233174	SEALING WASHER	1
1-22	16233122	NUT M8 x 1	1	1-49	16233149	COVER	1	1-75	16233175	OUTLET FUEL PIPE	1
1-23	16233123	WASHER 8	1	1-50K	16233150K	RECOIL STARTER ASSY	1	1-76	16233176	INLET FUEL PIPE	1
1-24	16233124	STOP CORD COMP	1	1-51	16233151	PLUG CAP	1	1-77	16233177	PRIMARY CORD GROMMET	1
1-25	16233125	PRIMARY CORD GROMMET	1	1-52	16233152	CLICK SPRING	1	1-78	16233178	CLEANER	1
1-26	16233126	MAGNETO STATOR	1	1-53	16233153	PLUG COVER	1	1-79	16233179	FUEL TANK	1
1-26A	16233126A	MAGNETO ROTOR	1	1-54	16233154	PLUG	1	1-80	16233180	RUBBER COVER	1
1-27	16233127	SCREW M5 x 25	1	1-55	16233155	SCREW M5 x 20	4				

FIG. 2: T233 Shoulder Brush Cutter Explosive Picture



Ser.NO.	Code	Part Name	Qty	Ser.NO.	Code	Part Name	Qty	Ser.NO.	Code	Part Name	Qty
2-1	16233201	GEAR CASE ASS'Y	1	2-32	16233232	WASHER 5	2	2-63	16223263	SPRING	1
2-2	16233202	STOP RING 26	1	2-33	16233233	CLAMP B	1	2-64	16223264	THROTTLE LEVER	1
2-3	16233203	STOP RING 10	1	2-34	16233234	CLAMP A	1	2-65	16223265	CABLE COMP.	1
2-4	16233204	BEAR ING 6000-2RS/P5	2	2-35	16233235	SCREW M6 x 20	4	2-66	16223266	TUBE	1
2-5	16233205	PINION	1	2-36	16233236	FLEXIBLE WASHER 6	4	2-67	16223267	SCREW M5 x 20	1
2-6	16233206	SCREW M5 x 25	2	2-37	16233237	FLAP WASHER 6	4	2-68	16223268	SCREW M5 x 30	1
2-7	16233207	WASHER	2	2-38	16233238	HOLDER ASS'Y	4	2-69	16223269	BOX,LEFT	1
2-8	16233208	BOLT M6 x 12	2	2-39	16233239	HARNES CLAMP	1	2-70	16223270	NUT M6	2
2-9	16233209	GEAR CASE	1	2-40	16233240	CLMAP	1	2-71	16223271	WIRE CLAMP BAND	3
2-10	16233210	SAFETY GUARD	1	2-41	16233241	SCREW M5 x 20	1	2-72	16223272	SCREW M5 x 20	1
2-11	16233211	SCREW M5 x 12	3	2-42	16233242	NUT M5	4	2-73	16223273	WASHER 5	1
2-12	16233212	BEAR ING 6000/P5	1	2-43	16233243	PIPE COMP.	1	2-74	16223274	BRACKET	1
2-13	16233213	GEAR	1	2-44	16233244	RUBBER COVER	6	2-75	16223275	NUT	1
2-14	16233214	GEAR SHAFT	1	2-45	16233245	OIL-BEARING 8x14x14	6	2-76	16223276	SATETY GUARD	1
2-15	16233215	BEARING 6002-2RS/P5	10	2-46	16233246	DRIVER SHAFT 1534mm	1	2-77	16223277	SPACER	1
2-16	16233216	STOP RING 32	10	2-47	16233247	PIPE 26x1.5x1500	1	2-78	16223278	SCREW M5 x 16	4
2-17	16233217	HOLDER A	1	2-48	16233248	HANDLE ASS'Y	1	2-79	16223279	SCREW S 4.2 x 16	1
2-18	16233218	HOLDER B	1	2-49	16233249	SCREW M5 x 35	4	2-80	16223280	BLADE	1
2-19	16233219	WASHER 10	1	2-50	16233250	HANDLE	1	2-81	16223281	SCREW ST4.2 x 12	2
2-20	16233220	LEFT NUT M10 x 1.25	1	2-51	16233251	HANDLE COVER	1	2-82	16223282	GUARD ASS'Y	1
2-21	16233221	PIN 2 x 6	2	2-52	16233252	LEVEL ASS'Y	1	2-83	16223283	HARNES ASS'Y	1
2-22	16233222	BLADE	1	2-53	16233253	SCREW M5 x 10	1	2-84	16223284	HARNES ASS'Y	1
2-23	16233223	CLUTCH COMP.	1	2-54	16233254	CLMAP	1	2-85	16223285	NYLON CUTTER HEAD	1
2-24	16233224	CLUTCH DRUM COMP.	1	2-55	16233255	BOX, RIGHT	1	2-86	16223286	CASE	1
2-25	16233225	STOP RING 35	1	2-56	16233256	RUBBER COVER	1	2-87	16223287	LEFT NUT A	1
2-26	16233226	BERING 6202-2RS/P5	1	2-57	16233257	CLAMP	1	2-88	16223288	WASHER	1
2-27	16233227	STOP RING 15	1	2-58	16233258	STOP SWITCH	1	2-89	16223289	SPRING	1
2-28	16233228	CLUTCH CASE	1	2-59	16233259	TINE	1	2-90	16223290	ROPE	1
2-29	16233229	RUBBER COVER	1	2-60	16233260	SPRING	1	2-91	16223291	CORD HOLDER	1
2-30	16233230	SCREW M5 x 25	3	2-61	16233261	SPRING	1	2-92	16223292	COVER	1
2-31	16233231	WASHER 5	2	2-62	16233262	SAFETY LEVER	1				