

SPARE PARTS LIST

MODEL NO. EBH253U

ITEM	PART NO.	DESCRIPTION	QTY	NOTE
001	125544-0	CONTROL LEVER ASSEMBLY INC. 2-15,221	1	
002	266326-2	TAPPING SCREW 4X18	3	
003	183A10-9	LEVER CASE SET INC. 15	1	
004	638663-8	LEAD UNIT	1	
005	451081-1	CABLE HOLDER	1	
006	451213-0	CORRUGATE TUBE	1	
007	168527-7	CONTROL CABLE	1	
008	451083-7	LOCK OFF LEVER	1	
009	233541-3	TORSION SPRING 7	1	
010	233540-5	TORSION SPRING 11	1	
011	451084-5	THROTTLE LEVER	1	
012	455722-1	SWITCH COVER	1	
013	451082-9	SWITCH LEVER	1	
014	232251-9	LEAF SPRING	1	
015	183A10-9	LEVER CASE SET INC. 3	1	
016	266326-2	TAPPING SCREW 4X18	1	
017	188659-4	GRIP SET INC. 18	1	
018	188659-4	GRIP SET INC. 17	1	
019	922256-4	HEX. SOCKET HEAD BOLT M5X35	1	
020	331862-8	HANDLE 19	1	
021	168796-0	KNOB 57	1	
022	318429-9	HANDLE CLAMP	1	
023	318428-1	HANDLE HOLDER	1	
024	233202-5	COMPRESSION SPRING 20	1	
025	318427-3	PIPE HOLDER	1	
026	318426-5	PIPE CLAMP	1	
027	922241-7	HEX. SOCKET HEAD BOLT M5X25	2	
028	195143-2	HANGER SET INC. 29	1	
029	911233-1	PAN HEAD SCREW M5X20	1	
030	422045-2	CUSHION	1	
031	140041-5	SHAFT PIPE COMPLETE	1	
032	898104-8	CAUTION LABEL	1	
033	801D19-4	SERIAL NO. LABEL	1	
034	922256-4	HEX. SOCKET HEAD BOLT M5X35	1	
035	324893-4	SHAFT	1	
036	922218-2	H.S.H.BOLT M5X14 WITH WR	2	
037	125556-3	GEAR CASE ASSEMBLY INC. 40-46,49-54	1	
040	210049-4	BALL BEARING 609ZZ	1	
041	961005-4	RETAINING RING S-9	1	
042	962103-7	RETAINING RING R-24	1	
043	922241-7	HEX. SOCKET HEAD BOLT M5X25	1	
044	265590-2	+HEX.BOLT M8X10 WITH R	1	
045	211019-6	BALL BEARING 626	1	
046	183A00-2	CUTTER SHAFT SET	1	
049	210115-7	BALL BEARING 6001LLU	1	
050	962106-1	RETAINING RING R-28	1	
051	331861-0	RECEIVE WASHER	1	
052	346084-7	CLAMP WASHER	1	
053	168526-9	CUP	1	
054	264025-0	HEX. NUT M10-17	1	
055	452260-4	PROTECTOR	1	
056	451097-6	PROTECTOR COVER	1	
057	266579-3	HEX SOCKET HEAD BOLT M6X30	2	
058	346073-2	PROTECTOR CLAMP	1	

SPARE PARTS LIST

MODEL NO. EBH253U

ITEM	PART NO.	DESCRIPTION	QTY	NOTE
059	266326-2	TAPPING SCREW 4X18	1	
060	346074-0	CUTTER	1	
061	135398-7	PROTECTOR EXTENSION ASSY INC. 59,60	1	
062	922226-3	HEX. SOCKET HEAD BOLT M5X18	2	
063	922211-6	HEX. SOCKET HEAD BOLT M5X12	1	
064	424191-7	PIPE DAMPER 1	1	
065	318270-0	PIPE BRACKET 1	1	
066	318271-8	PIPE BRACKET 2	1	
067	424107-2	PIPE DAMPER 2	1	
068	922222-1	HEX. SOCKET HEAD BOLT M5X16	3	
069	318329-3	CLUTCH CASE	1	
070	450569-8	SPACER	1	
071	961052-5	RETAINING RING S-12	1	
072	168809-7	CLUTCH DRUM	1	
073	210111-5	BALL BEARING 6201LLU	1	
074	962151-6	RETAINING RING R-32	1	
075	195144-0	STAND SET INC. 76	1	
076	911218-7	PAN HEAD SCREW M5X14	2	
077	911213-7	PAN HEAD SCREW M5X12	2	
078	450654-7	CYLINDER COVER	1	
079	819312-8	MAKITA LOGO LABEL	1	
080	452144-6	PLUG COVER	1	
081	898102-2	4STROKE INDICATION LABEL	1	
083	911128-8	PAN HEAD SCREW M4X16	2	
084	266440-4	HEX SOCKET HEAD BOLT M5X40	2	
085	265184-3	+TRUSS HEAD SCREW M5X5	1	
086	345915-7	MUFFLER COVER	1	
087	168469-5	EXHAUST MUFFLER	1	
088	345916-5	MUFFLER GASKET	1	
089	140023-7	ROCKER COVER COMPLETE	1	
090	162275-0	ROCKER COVER GASKET	1	
091	922223-9	H.S.H.BOLT M5X16 WITH WR	3	
092	168534-0	SPARK PLUG	1	
093	162274-2	CAM GEAR COVER GASKET	1	
094	318443-5	CAM GEAR COVER	1	
095	922217-4	HEX. SOCKET HEAD BOLT M5X14	3	
096	450565-6	OIL GAUGE	1	
097	424100-6	GASKET	1	
098	162276-8	CASE GASKET	1	
099	318442-7	OIL CASE	1	
100	922217-4	HEX. SOCKET HEAD BOLT M5X14	4	
101	325666-8	OIL WEIGHT	1	
102	424202-8	OIL TUBE	1	
103	282020-8	HOSE CLAMP	1	
104	922112-8	HEX. SOCKET HEAD BOLT M4X10	1	
105	318440-1	RETAINER PLATE	1	
106	346083-9	LEAD VALVE	1	
107	135375-9	CYLINDER BLOCK ASSEMBLY INC. 108-110	1	
108	424201-0	CHECK VALVE	2	
109	922217-4	HEX. SOCKET HEAD BOLT M5X14	8	
110	424200-2	SPACER	2	
111	125554-7	ROCKER ARM ASSEMBLY	2	
112	325668-4	SPRING RETAINER	2	
113	234108-0	COMPRESSION SPRING 9	2	
114	256200-2	PIN 5	1	
115	326367-1	INTAKE VALVE	1	
116	326366-3	EXHAUST VALVE	1	
117	125552-1	CAM GEAR ASSEMBLY	1	

SPARE PARTS LIST

MODEL NO. EBH253U

ITEM	PART NO.	DESCRIPTION	QTY	NOTE
118	268238-5	PIN 5	1	
119	313169-4	CAM LIFTER	2	
120	268239-3	PIN 4	1	
121	256865-0	ROD 2.5	2	
122	196595-0	PISTON RING SET	1	
123	233976-8	CLIP	2	
124	318441-9	PISTON	1	
125	257781-9	PISTON PIN	1	
126	213147-3	OIL SEAL 12	1	
127	267400-9	FLAT WASHER 23	1	
128	135539-5	CRANKSHAFT ASSEMBLY	1	
129	213148-1	OIL SEAL 10	1	
130	424105-6	PLUG CAP	1	
131	324891-8	PLUG CAP SPRING	1	
132	168501-5	IGNITION COIL	1	
133	922138-0	H.S.H.BOLT M4X20 WITH WR	2	
134	318343-9	FLYWHEEL	1	
135	267812-6	WASHER 6	2	
136	161332-1	CLUTCH SHOE	2	
137	267817-6	WASHER 8	2	
138	266864-4	SHOULDER HEX. BOLT M6X25	2	
139	265577-4	HEX HEAD BOLT M6X16	1	
140	231881-3	TENSION SPRING 7	1	
141	125472-9	FUEL TANK CAP ASSEMBLY INC. 142,143	1	
142	140435-4	FUEL TANK CAP	1	
143	140436-2	STRAP COMPLETE	1	
144	810455-9	CAUTION PLATE	1	
145	424102-2	PLATE	1	
146	424103-0	PLATE	1	
147	424104-8	DAMPER	1	
148	450566-4	FUEL TANK	1	
149	163447-0	GASOLINE FILTER	1	
150	345920-4	HOSE CLAMP	1	
151	168472-6	TUBE COMPLETE	1	
152	195147-4	RECOIL STARTER SET INC. 153-160	1	
153	168471-8	PULLEY	1	
154	266585-8	TAPPING SCREW 5X12	1	
155	451940-9	CAM PLATE	1	
156	233984-9	DAMPER SPRING	1	
157	451939-4	REEL	1	
158	232258-5	SPIRAL SPRING	1	
159	424319-7	STARTER KNOB	1	
160	444020-8	STARTER ROPE	1	
161	809117-4	EBH253U MODEL NO. LABEL	1	
162	265188-5	+PAN HEAD SCREW M5X68	2	
163	345919-9	PLATE	1	
164	423376-2	GASKET	1	
165	450560-6	CHOKE PLATE	1	
166	911218-7	PAN HEAD SCREW M5X14	1	
167	450561-4	AIR CLEANER COVER	1	
168	443141-3	AIR CLEANER ELEMENT	1	
169	443140-5	AIR CLEANER ELEMENT	1	
170	345918-1	HOSE CLAMP	1	
171	422041-0	BREATHER PIPE	1	
172	422042-8	PIPE	1	
173	125468-0	CLEANER PLATE ASSEMBLY INC. 173-181	1	
174	451925-5	CHOKE LEVER	1	
175	213540-1	O RING 15	1	

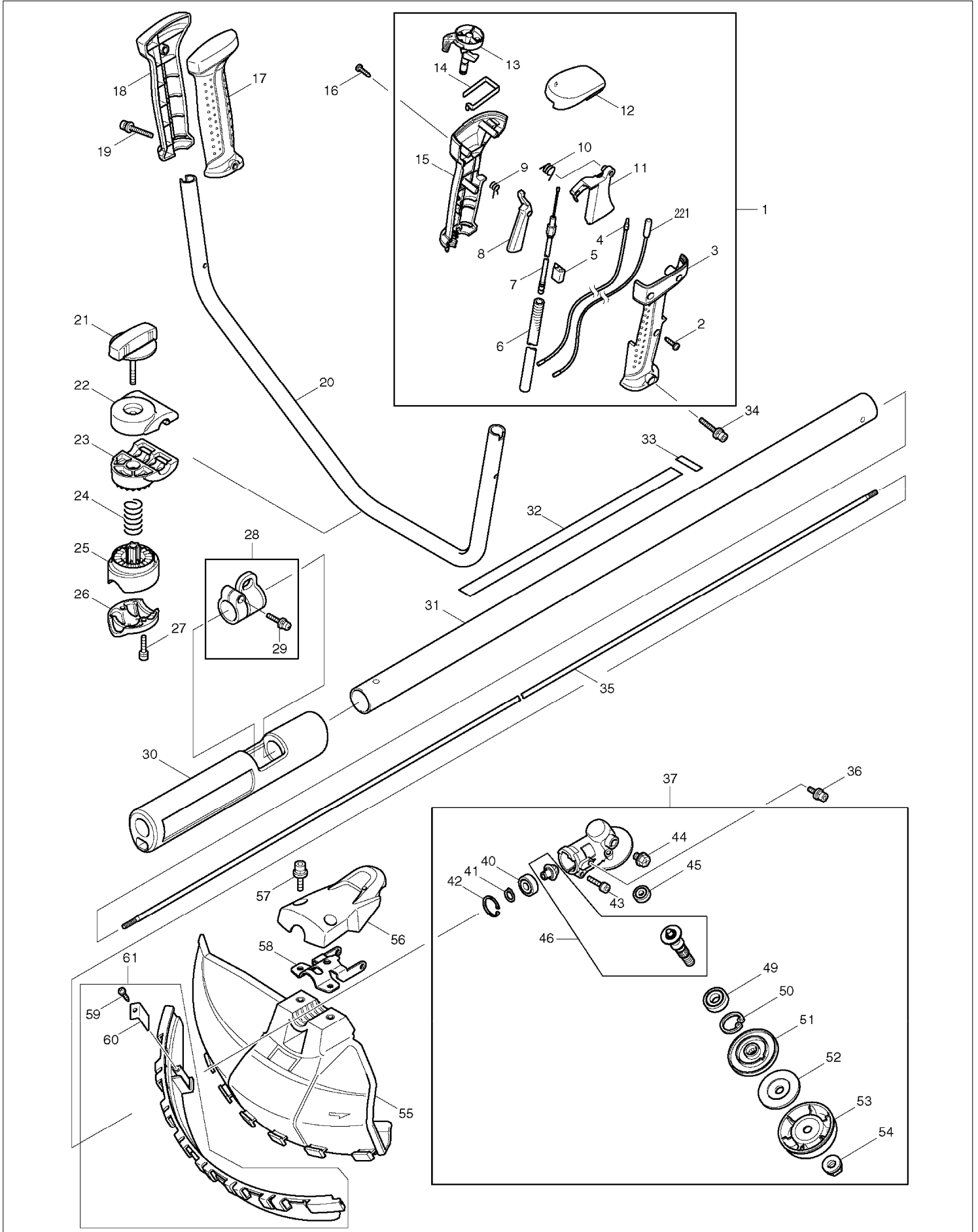
SPARE PARTS LIST

MODEL NO. EBH253U

ITEM	PART NO.	DESCRIPTION	QTY	NOTE
176	424316-3	CHECK VALVE	1	
177	213539-6	O RING 14	1	
178	451924-7	CHECK VALVE PLATE	1	
179	424315-5	CHECK VALVE	1	
180	168577-2	SEPARATOR GASKET	1	
181	168576-4	SEPARATOR PLATE	1	
182	413121-3	CARBURETOR GASKET	1	
183	922228-9	H.S.H.BOLT M5X18 WITH WR	2	
184	450559-1	INSULATOR	1	
187	324961-3	INTAKE PIPE	1	
188	413120-5	INSULATOR GASKET	1	
189	213078-6	O-RING 10	1	
190	922213-2	H.S.H.BOLT M5X12 WITH WR	1	
191	450562-2	CLAMP	1	
193	168497-0	CARBURETOR	1	
		INC. 194,196-210		
194	140437-0	PUMP BODY	1	
		INC. 195		
195	352010-6	INLET SCREEN	1	
196	442154-1	METERING DIAPHRAGM GASKET	1	
197	168574-8	METERING DIAPHRAGM	1	
198	140438-8	AIR PURGE BODY	1	
199	424314-7	PRIMER PUMP	1	
200	346270-0	PRIMER PUMP COVER	1	
201	266582-4	TAPPING SCREW 3X24	4	
202	168575-6	PUMP DIAPHRAGM	1	
203	442155-9	PUMP GASKET	1	
204	325924-2	JET	1	
205	213538-8	O RING 2	1	
206	234183-6	CONICAL COMPRESSION SPRING 5-9	1	
207	WJ00096364	SCREW M3X8 WITH WASHER	2	
208	325922-6	SWIVEL	1	
209	413140-9	WASHER	1	
210	257964-1	STOP RING E-3	1	
211	806902-6	GAS EMISSION APPROVAL LABEL	1	
212	345964-4	TANK GUARD	1	
213	814998-3	SERIAL LABEL	1	
214	911148-2	PAN HEAD SCREW M4X25	2	
215	911213-7	PAN HEAD SCREW M5X12	2	
216	331835-1	SPACER	2	
217	345963-6	CLAMP	1	
218	638664-6	LEAD UNIT	1	
219	638665-4	LEAD UNIT	1	
220	324980-9	SPARK ARRESTER	1	
221	638671-9	LEAD UNIT	1	
222	413143-3	WASHER	2	
A01	122906-3	BAND ASSY	1	
A02	242072-1	OIL BOTTLE	1	
A03	783013-3	BOX DRIVER 16-17	1	
A04	783217-7	HEX. WRENCH 5	1	
A05	783202-0	HEX. WRENCH 4	1	
A06	831304-7	ACCESSORY BAG	1	
A07	450573-7	TOOL COVER	2	
A08	B-14118	STAR BLADE 230X4TX25.4	1	AEPD-002/98
A10	195500-4	OIL SET	1	
E02	819430-2	CAUTION TAG	1	

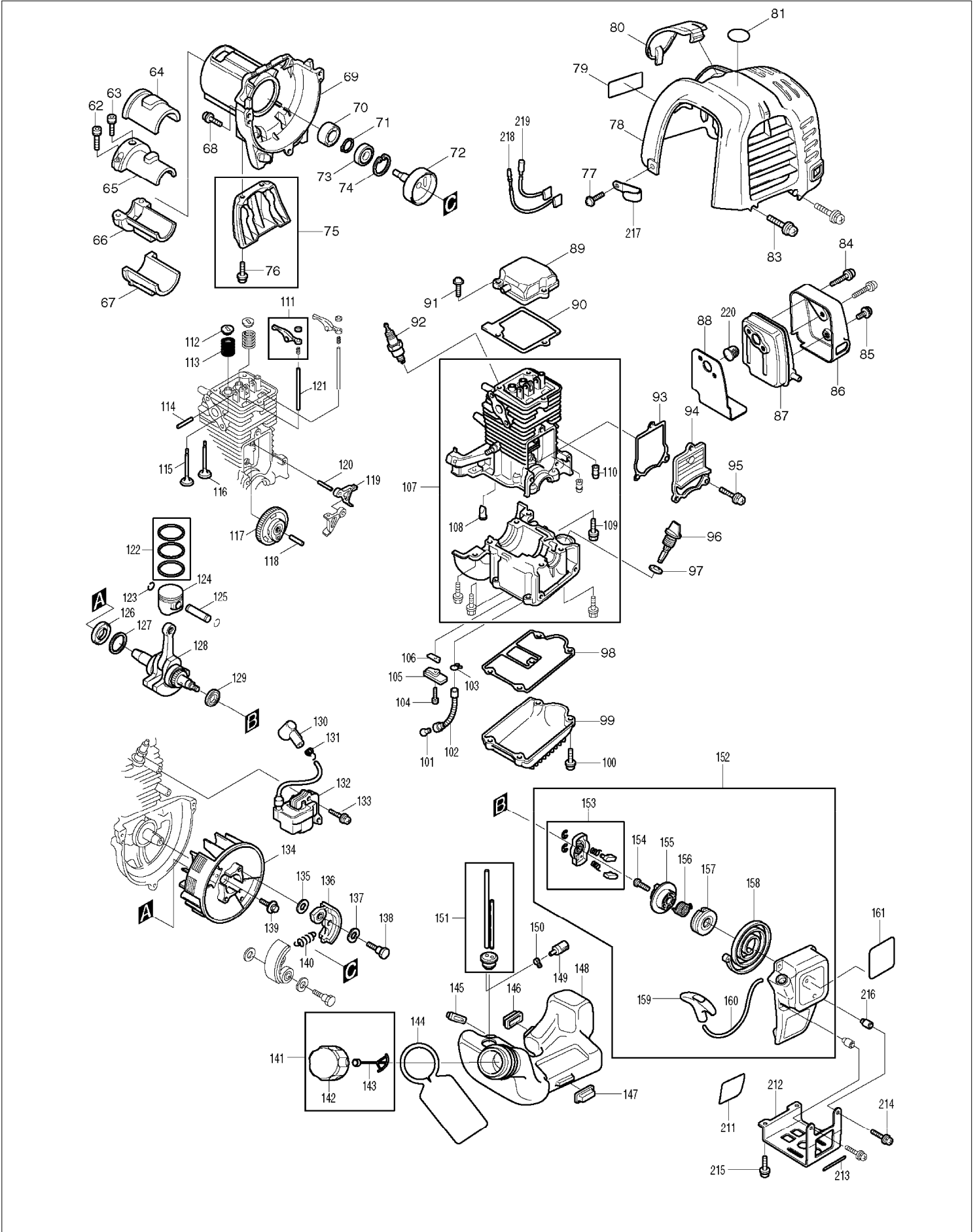
SERVICE DRAWING

MODEL NO. EBH253U



SERVICE DRAWING

MODEL NO. EBH253U



SERVICE DRAWING

MODEL NO. EBH253U

